

## Hinweis

*Advice – Avis*

Luft einschüsse innerhalb der Klebefläche stellen keinen Reklamationsgrund dar, solange die Funktion des Profils nicht beeinträchtigt wird.

*Entrapped air within the adhesive area does not constitute a reason for complaint as long as the function of the rail is not affected. sous réserve de modifications techniques.*

*Les bulles d'air à l'intérieur de la surface adhésive ne constituent en aucun cas un motif de réclamation dans la mesure où cela n'altère pas le fonctionnement du profilé.*

### **Wichtig!**

**Bitte mit der Pflegeanleitung aufbewahren!**

**Important!**

**Please keep together with care instructions! –**

**Important!**

**Conserver ensemble avec les conseils d'entretien!**

entspricht EN 13120

*according to EN 13120 – selon EN 13120*

02 / 2021

technische Änderungen bleiben

vorbehalten

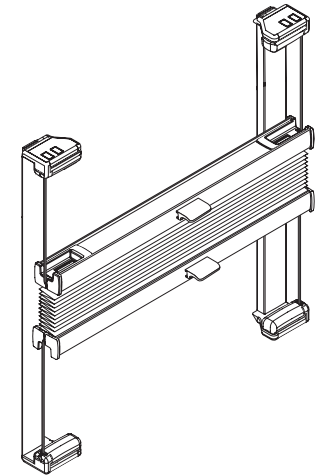
*subject to technical change*

*sous réserve de modifications techniques*

# VS 2 KL

## Montage- und Bedienanleitung

*Assembly and operating instructions  
Notice de montage et mode d'emploi*



04046046440901

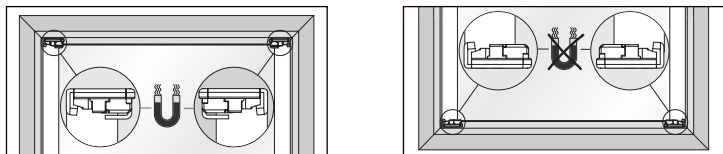
# A Montage

Fixation – Montage



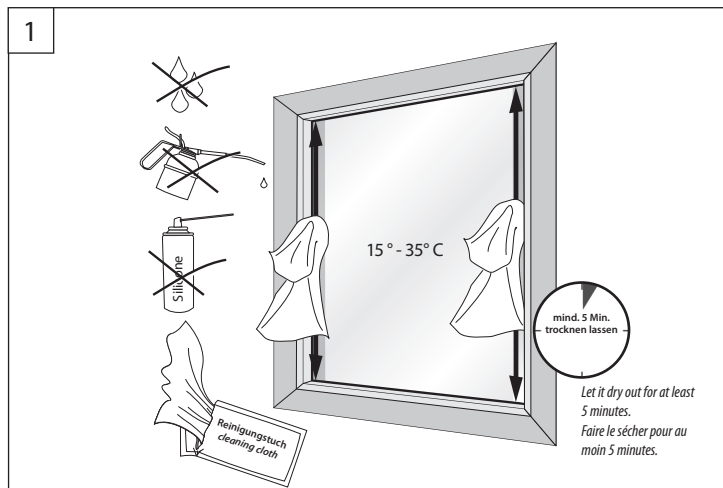
## FALZMONTAGE

TOP FIXING – DANS LA RAINURE

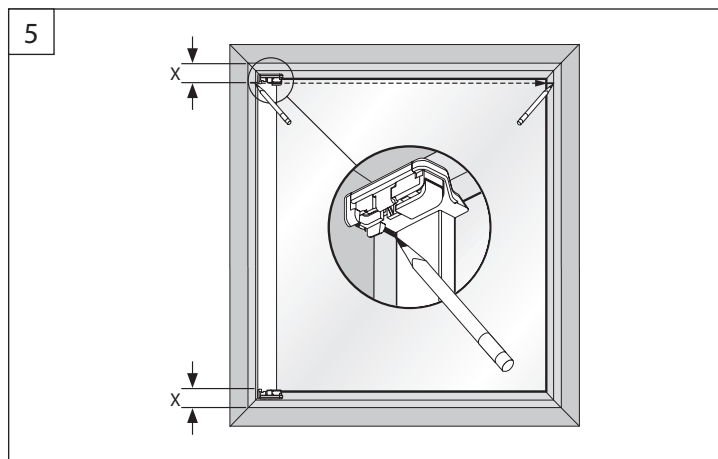
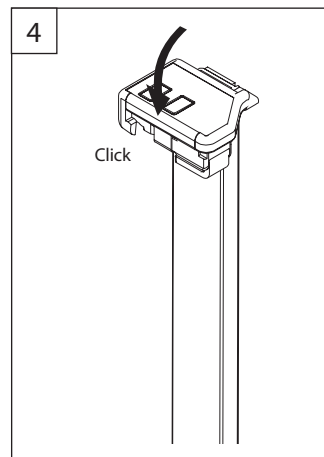
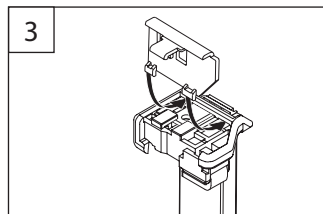
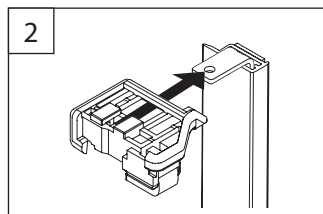


Montage mit Klebprofil direkt auf der Glasscheibe.

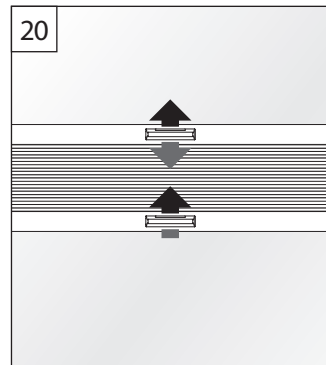
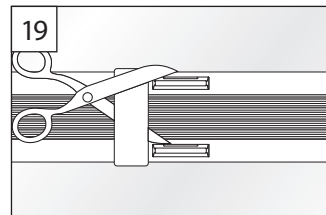
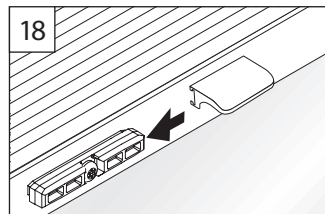
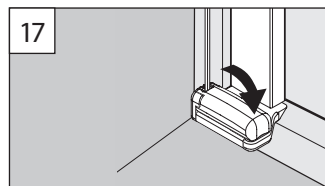
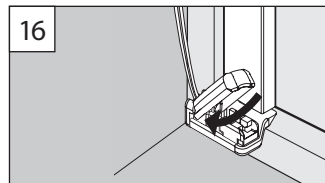
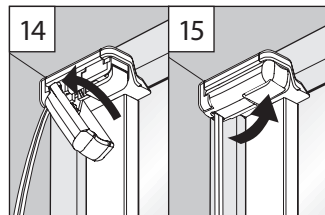
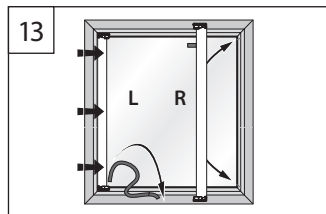
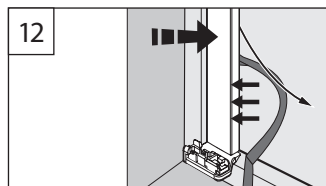
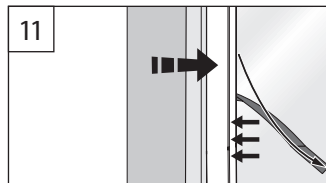
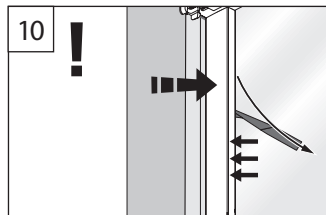
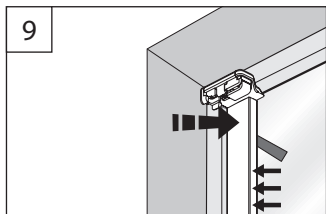
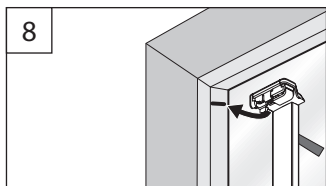
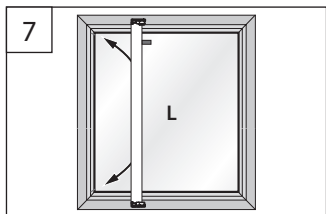
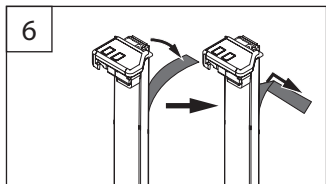
Mounting of the adhesive profile directly on the pane. – Montage avec profile à coller directement sur la vitre.



1

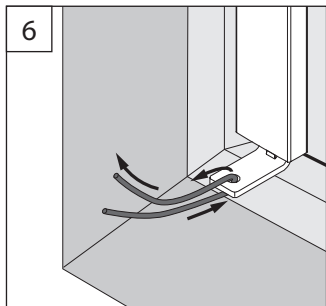
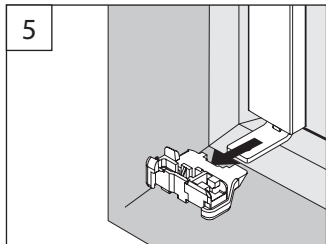
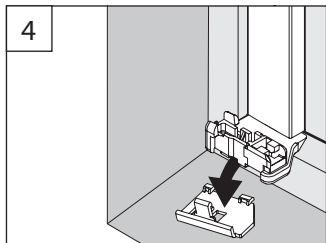
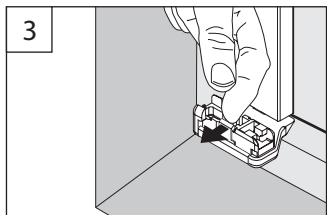
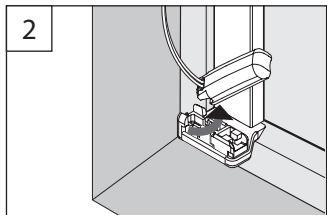
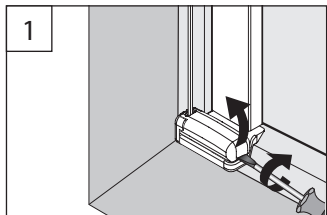


2

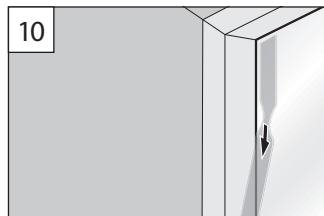
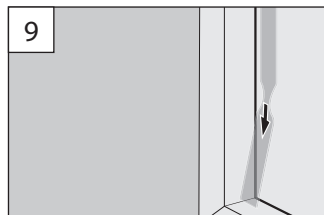
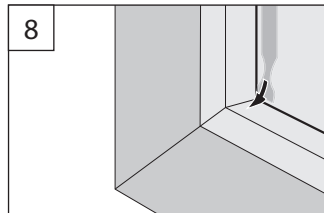
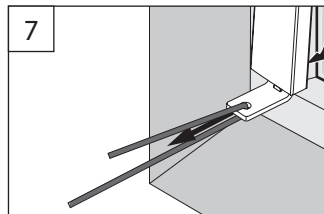


## B Demontage

Dismantling – Démontage



5



6